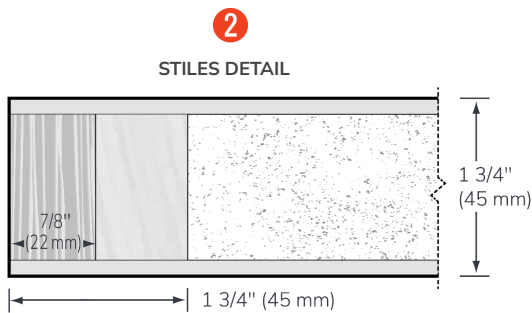
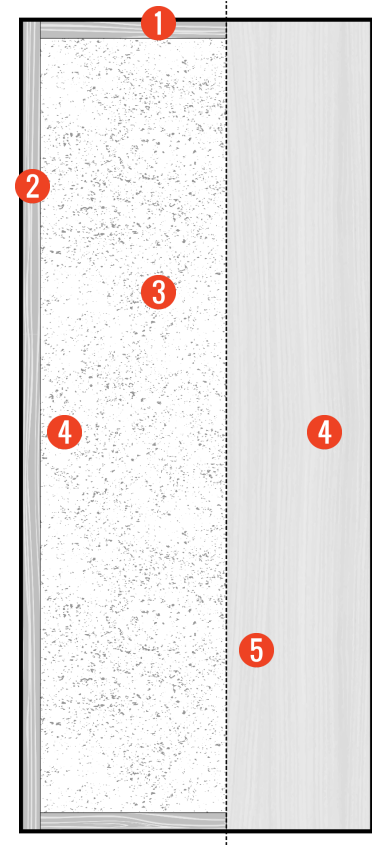


- 1 Top and bottom rails: 1 1/4" ( 32 mm )**  
clear finger jointed, low density wood
- 2 Stiles: 1 3/4" ( 45 mm )**  
Laminated Strand lumber bonded to 7/8" ( 22 mm ) pc of hardwood  
matched with face
- 3 Low combustible Agrifibre core**
- 4 Integrated Lock blocks**
- 5 Wood Veneer (many choices, 2 ply)**  
hardwood panel or plastic laminate



Note: dimensions are nominal before trimming.

**Adhesive Type 1, Waterproof**  
UF free

**45-minutes Fire Rating**  
Included

**Warranty: 1 year**

\* To maintain warranty and to comply to the fire rated standard.  
Pre machining must be completed by PSM or an authorized distributor.

\*\*Certain applications will require the additional blocking  
in specific locations.

**Eligible credits**

To obtain credits, specify "PUSM Eco Series"

**LEED Canada - NC 2009**

M.R.					Q.E.I			I.D.	P.R.	
3	4	5	7	5.1	5.2	3.2 op2	4.1	4.4	1.mo1	2
✓	✓	✓	✓			✓	✓	✓	✓	✓

**LEED Canada - C1 (v1.0)**

M.R.							Q.E.I		I.D.		
3.1	3.2	4.1	4.2	5.1	5.2	7	3.2 opB	4.1	4.4	1.1	1.2
✓	✓	✓	✓	✓	✓	✓	✓	✓	✓	✓	✓